

# IL2000

Chip Inspection System

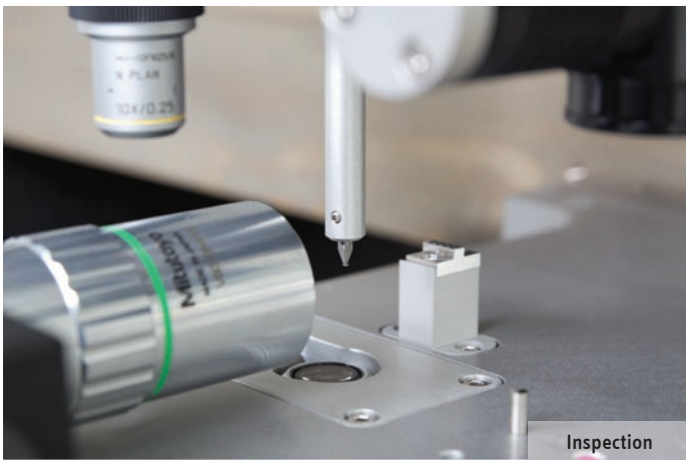


***ficonteC***  
micro assembly machines

# IL2000 Chip Inspection System

For side wall inspection of semiconductor chips as well as for the inspection of coated facets the ficonTEC IL2000 is the dedicated machine.

The fully automatic machine acquires high resolution pictures of the surfaces of interest and performs optical inspections based on the user's criteria. A top and bottom side inspection module can be added to this system as well as different material feeding philosophies.



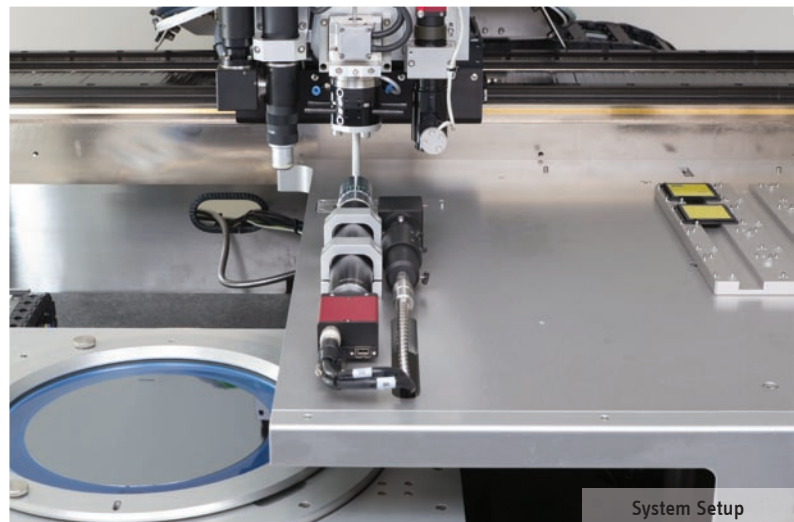
## Inspection Engine

The inspection engine builds the heart of the IL2000 machine.

- High magnification imaging system
- Color camera for individual color channel examination
- Köhler illumination
- Flashlamp white light exposure
- 20x microscope optics (50x optional)
- Dedicated vision processing server

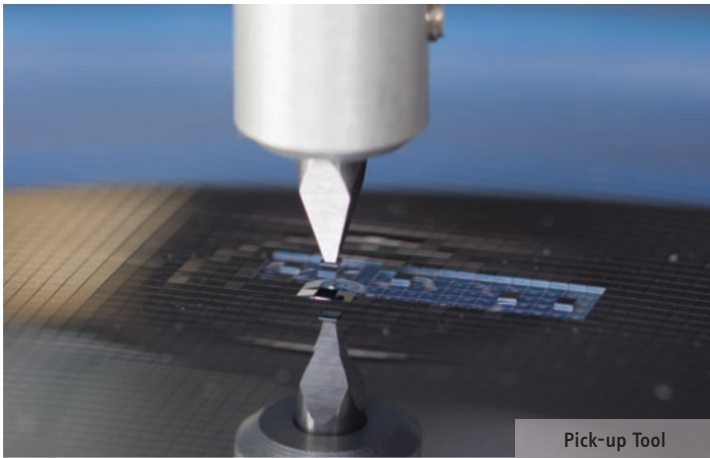
## Key Features

- Crack recognition
- Break-out detection
- Prognosis of crack propagation
- Particle recognition
- Dust and fiber identification
- Detailed component/batch/lot tracking
- Individual error catalogue handling



## Applications

- Side wall inspection of semiconductor chips
- Facet inspection of laser diodes
- Coating quality control
- Surface inspection
- Die Sorting



Pick-up Tool

## Module Approach

For higher throughput and/or lower cost of ownership the IL2000 can be extended by modules.

- Automatic tray handling
- Waferlevel product presentation
- Reel tape feeding
- Testing capabilities (e.g. LIV)
- Top/bottom side inspection
- In-situ labeling



Machine, IL2000

## Industrial Grade Usage

- Maintenance-free linear motor motion system
- Granite machine bed
- Turbulence-free sliding doors
- Steel base frame
- Interlocked safety enclosure
- Pneumatic and electric switchboard cabinets
- Control system with industrial PC
- Dual TFT display, keyboard, trackball

## Easy Operation Interface

As a unique feature all ficonTEC machines run the same machine software.

- Easy operation
- Excellent portability
- Component tracking throughout the entire machine processes

## What we do

ficonTEC designs and produces automated production equipment for the assembling or testing of components.

We are the market leader in the field of equipment for the assembly or test of micro-optics or opto-electronics such as laser diode manufacture, medical technology, security and military engineering, as well as telecommunications.



## Contact us

### EUROPE

ficonTEC Service GmbH, Rehland 8, 28832 Achim, Germany  
Phone: +49 4202 51160-0, Fax: +49 4202 51160-090  
Mail: [info@ficontec.com](mailto:info@ficontec.com)

### USA

ficonTEC (USA) Corporation, 25 Calle Canela, San Clemente, CA 92673, USA  
Phone: +1 949 388-5800, Fax: +1 949 388-1489  
Mail: [usa@ficontec.com](mailto:usa@ficontec.com)

### ASIA

ficonTEC Trading (Shanghai) Limited Company  
Rm. 303, Floor 3, No. 150 Liulin Road, Huangpu District 200021, Shanghai, PRC  
Phone: +86-21-5273 0985, Fax: +86-21-5273 0985  
Mail: [china@ficontec.com](mailto:china@ficontec.com)

[www.ficontec.com](http://www.ficontec.com)



## ISO 9001 Certification

ficonTEC Service GmbH is licensed to ISO 9001:2008 certification, by DNV GL/Hamburg, Germany.